



📍 Flat 3 St. Johns Mews, Devizes, Wiltshire, SN10 1BN

🏠 Guide Price £135,000

A delightfully presented and characterful ground floor apartment, tucked away in the heart of historical Devizes.

- Characterful ground floor apartment
- Tucked away in the heart of Devizes
- 1 double bedroom
- Modern refitted kitchen
- Large lounge/diner
- Wood burner in reception room
- Town centre amenities on your doorstep

🏠 Leasehold

🏠 EPC Rating D



Tucked away within a quiet mews setting yet positioned in the very heart of the town centre, this charming ground floor character apartment offers a rare combination of seclusion and convenience.

The accommodation is thoughtfully arranged and centres around a generous reception room, with separate entrance, featuring a wood burner that provides a warm, inviting focal point and is certainly a rarity for this type of home. The modern kitchen is fitted with wooden worktops, electric oven & hob, a breakfast bar and benefits from a secondary entrance.

The bedroom is well proportioned and complemented by a bathroom, making the apartment ideally suited to first-time buyers, downsizers or those seeking a centrally located bolt-hole. Outside, residents benefit from use of a shared courtyard, providing a pleasant outdoor space within this tucked-away setting.

A characterful town centre apartment combining charm, modern finishes and an enviable yet discreet location.

Situation

Conveniently located in the town, St Johns Mews is set in a quiet spot right in the heart of the centre. The property itself sits within a short distance of the town centre and the recently renovated Hillworth Park. A historic market town, Devizes has many amenities including town centre shopping, a leisure centre, schools for all ages, various supermarkets, a variety of shops, cinema, theatre and thriving weekly market. The historic Kennet & Avon Canal runs through the town providing fishing and walking facilities. The major centres of Bath, Salisbury, Swindon, Marlborough and Chippenham are all within a 30 mile radius.

Property information

Tenure: Share of Freehold (6 properties)

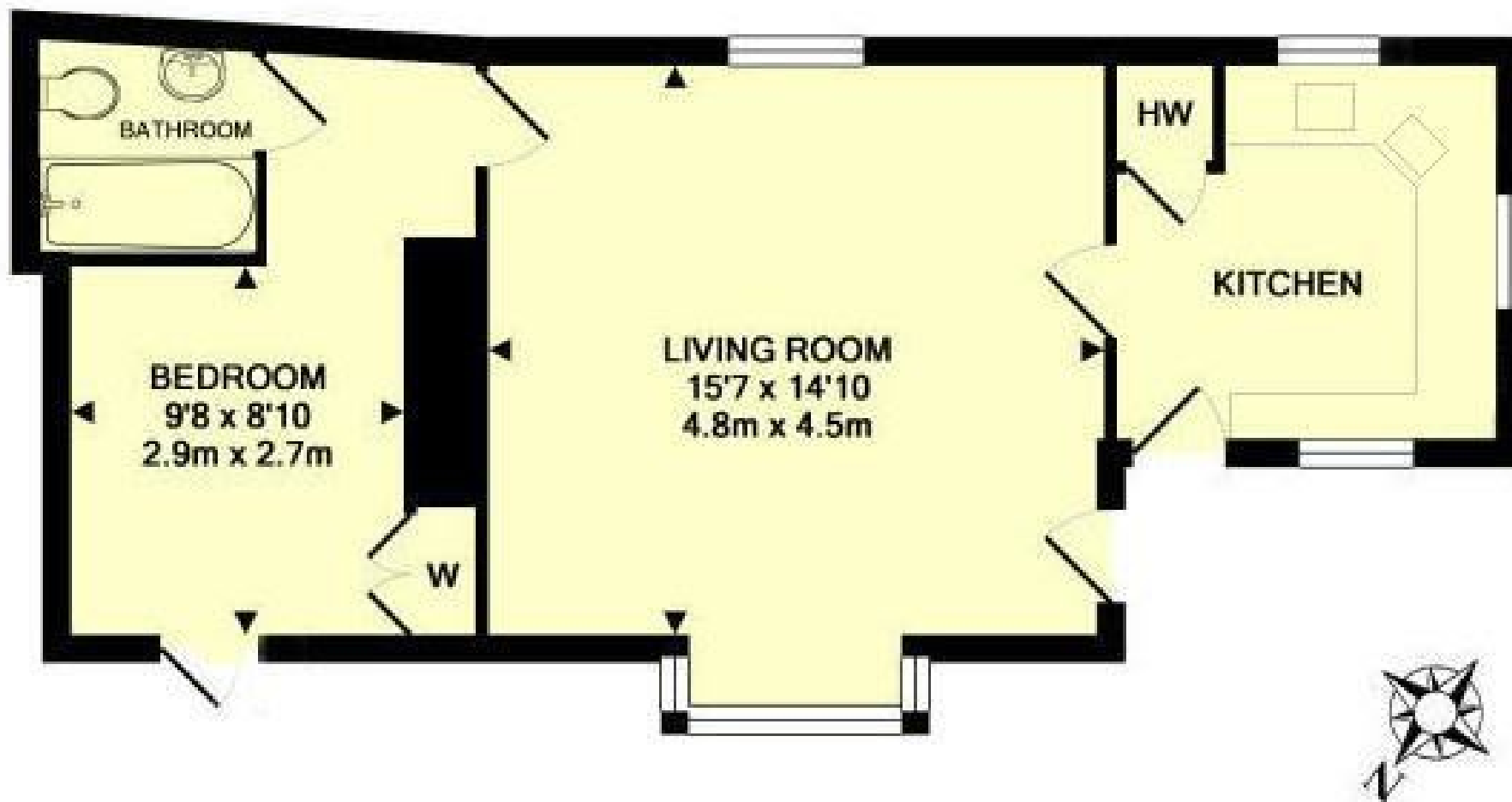
Lease: 999 years from 1988

Services: Electric heating, mains water, electric and drainage

Council Tax: Band: A

No Ground Rent and £75 per month Maintenance Charge (£900 p.a).





Disclaimer These particulars, whilst believed to be accurate are set out as a general outline only for guidance and do not constitute any part of an offer or contract. Intending purchasers should not rely on them as statements of representation of fact, but must satisfy themselves by inspection or otherwise as to their accuracy. No person in this firm's employment has the authority to make or give any representation or warranty in respect of the property. All measurements and distances are approximate only. Your home is at risk if you do not keep up repayments on a mortgage or other loan secured on it.